

# **IRU TECH**

Professional company for Precision parts

Cutting process / DIE CASTING

# IRU TECH Co., Ltd. strives to become a company that creates value with the **highest quality** and **customer satisfaction**.



## Greeting

IRU TECH is leaping into a leading company in the field of aluminum die casting for auto parts.

Since its establishment in 2011, we have started to manufacture cutting parts for precision parts and have been offering differentiated values beyond the expectations of our customers with the goal of trust and customer satisfaction. Robot control We have the ability to supply flexible products with automation casting equipment and machining lines. We provide reliable quality with advanced precision measuring equipment and field-oriented quality management system.

IRU TECH manufactures aluminum die-casting automobile parts for all kinds of automobile such as steering, engine, transmission, compressor, chassis part.

IRU TECH has been growing with our customers. We are one of the first company to fulfill customer satisfaction through continuous investment, continuous quality innovation and technological innovation in order to grow into a company that creates value in the rapidly changing environment of the automobile industry and the demands of increasing customers. . We promise that our employees will work hard together to create customer value through long-term growth and sustainable management.

I ask for your continued interest and encouragement.

Thank you.

CEO Oh Yūin



## Company History

- |             |    |  |             |    |  |
|-------------|----|--|-------------|----|--|
| <b>2011</b> | 06 | Established IRU TECH   | <b>2016</b> | 05 | Established R & D Center                         |
|             | 08 | Registered as a partner company of KC<br>[Export Compressor Parts] |             | 12 | 2 Factory Completed - X69F Automation Line       |
| <b>2012</b> | 01 | Die Casting / Production Line Construction                         | <b>2017</b> | 08 | SQ-MARK (HMC) main forging certification         |
|             | 12 | Registered as a partner company of S & T Motiv                     |             |    | AIAG D / C Special Audit CQI-27 Pass             |
| <b>2013</b> | 09 | Acquired ISO / TS-16949 certification                              |             |    | GM Global quality certification BQRS (Lite) Pass |
| <b>2015</b> | 01 | Certified for research & development department                    | <b>2018</b> | 03 | Certified as a company specialized in            |
|             |    | Certified as a technologically innovative small and                |             |    | material parts                                   |
|             |    | medium enterprise (INNO-BIZ)                                       |             |    |  |
|             |    | Acquired venture business certification                            |             |    |  |
|             | 07 | MSQ (Mobis Supplier Quality) processing certification              |             |    |  |

## Management Policy

### CREATE HIGH VALUE

Leading to growth by  
creating high added value

Crisis  
Management

Technical  
improvements,  
Cost Reduction

Client satisfaction,  
Quality assurance

Increased  
productivity





# A company that creates value

가치를 창출하는 기업

생산품목

# Production item

## STEERING

### MDPS

Steering drive system using electric battery and motor

**JF MDPS COVER**

Material: ADC12 Ton: 350 Vehicle type: k5

**GC MDPS COVER**

Material : ADC12 Ton : 350 Vehicle type : AVANTE

**IK / CK R-MDPS COVER / HOUSING**

Material : ADC12 Ton : 350 Vehicle type : STINGER

**LF DP-MDPS COVER / HOUSING**

Material : ADC12 Ton : 350,670 Vehicle type : SONATA

**TM C-MDPS COVER / HOUSING**

Material : ADC12 Ton : 350, 670 Vehicle type : SANTAFE

## STEERING

### EHPS

Steering drive system using motor and hydraulic pressure at the same time

**QZ EHPS COVER / HOUSING**

Material : ADC12 Ton : 350, 670 Vehicle type : XCIENT





생산품목

## Production item

### POWERTRAIN

#### HSG

Starts the hybrid vehicle, uses alternating current motor, and uses it as generator



LF HSG COVER

Material : ADC12 Ton : 670 Vehicle type : SONATA



LF HSG HOUSING

Material : ADC12 Ton : 670 Vehicle type : SONATA



THETA HSG COVER

Material : ADC12 Ton : 670 Vehicle type : GRANDEUR

### POWERTRAIN

#### Transmission Cover

Hydraulic supply and transport of transmission



GF6 CONTROL BODY

Material : ADC12 Ton : 850 Vehicle type : CRUZE / MALIBU



X69FS SHAFT & STATOR ASSY

Material : ADC12 Ton : 850 Vehicle type : CRUZE / MALIBU



## POWERTRAIN

### Timing Chain Cover

Mounted on the front of the engine, System protection and engine confidentiality



**GEN1 B12D Front Cover**

Material : ADC12 Ton : 850



**GEN2 B15D Front Cover**

Material : ADC12 Ton : 850



**GEN2 MLA / HLA**

Material : ADC12 Ton : 850

## POWERTRAIN

### Oil Pump

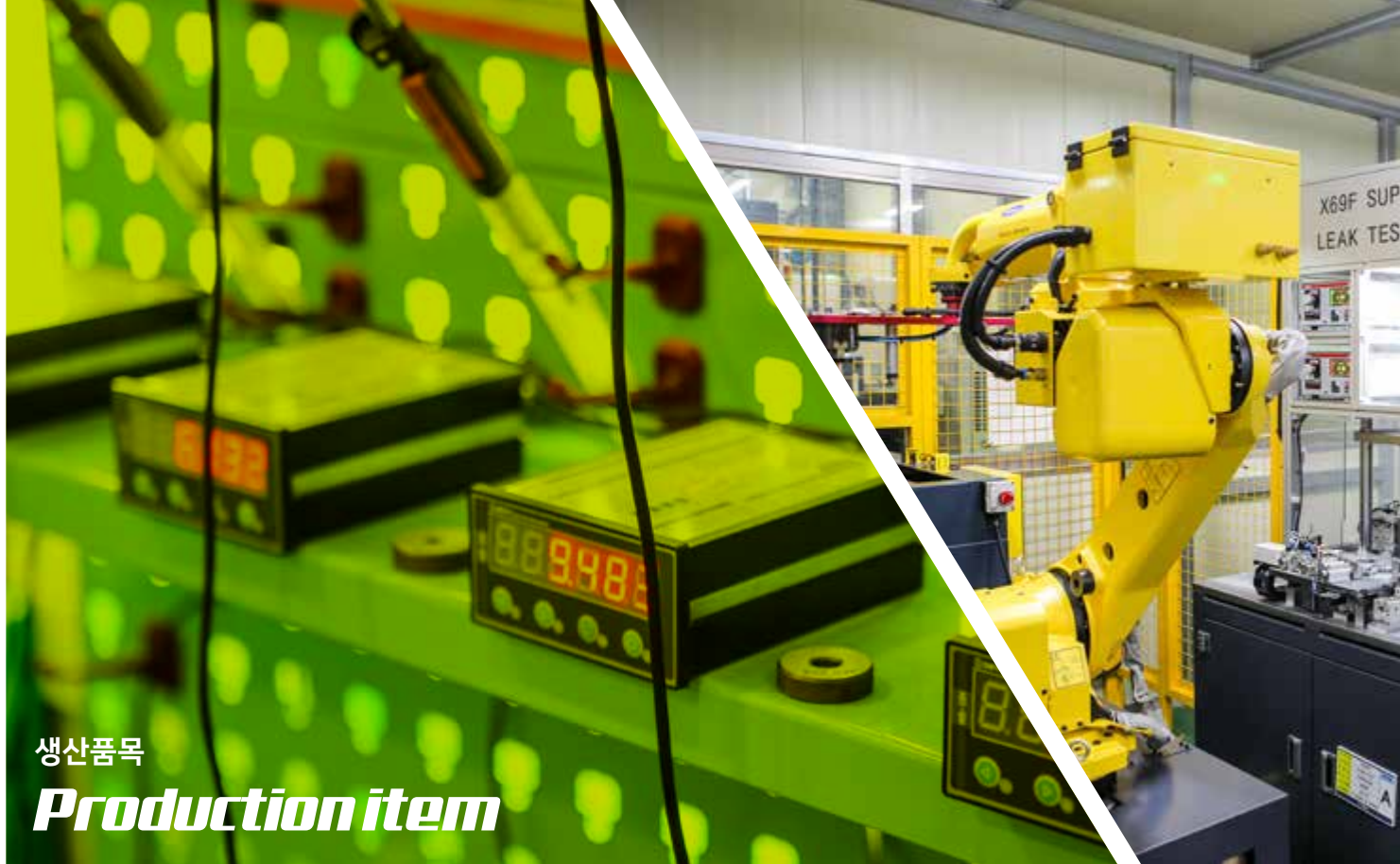
Pumps to supply oil to powertrain



**HFV6 GEN2 OIL PUMP HOUSING**

Material : ADC10 Ton : 670





생산품목

## Production item

### COMPRESSOR

#### HEAD

A case cover for hydraulically discharging the compressor



7CVC FRONT HEAD

Material : ADC12 Ton : 350



7CVC REAR HEAD

Material : ADC12 Ton : 350



H6 REAR HEAD

Material : ADC12 Ton : 350



HU FRONT HEAD

Material : ADC12 Ton : 350



HU REAR HEAD

Material : ADC12 Ton : 350





## COMPRESSOR

### HEAD

A case cover for hydraulically discharging the compressor



V5 FRONT HEAD 3EAR

Material : ADC12 Ton : 350



V5 FRONT HEAD 4EAR

Material : ADC12 Ton : 350

## COMPRESSOR

### Cylinder Block

A case for generating the pressure of the operating oil due to the reciprocating motion of the piston



H6 FRONT CYLINDER

Material : ADC12 Ton : 350



H6 REAR CYLINDER

Material : ADC12 Ton : 350

## ETC

### Mount Bracket

Multilink Suspension Rear for Electric Vehicle Shock Absorber Mount Bracket



ES8 REAR TOP MOUNT BRACKET

Material : AC4CH Ton : 350 Vehicle type : ES8

설비현황

# Facility Status

## Manufacturing facility

No	Equipment	Model	Q'ty	Manufacturer	Capacity/Year	Open Capa	Remarks
1	Die casting M/C	800T	3	TOSHIBA-1, UBE-2	900,000	200,000	casting
		UBE-670T	1	UBE	330,000	100,000	
		UBE-350T	1		1,000,000	250,000	
		TOSHIBA-350T	1	TOSHIBA			
2	Trimming M/C	10ton	3	DaeSung			
3	VERTICAL MCT Total 34	MAGNIX-30T2DN	6	DongYang Discharge	3,100,000	230,000 7.4%	
		GMT420	3	KOMATEC			
		I-CUT 420T	12	Hyundai WIA			
		DNM5700	4	DOOSAN			
		D21LiB	9	FANUC			
4	CNC Lathes Total 14	150A	2	Hyundai WIA	6,600,000	400,000 6.1%	Processing
		160A	4				
		200A	3				
		230A	4				
		LYNX220	2	DOOSAN			
5	Robot (Automatic processing 2 lines)	M-20iA	6	FANUC			
6	Automatic CNC Lathe	NN-20UB8	3	NOMURA			
7	Machine washers (Including automation)	Custom order	8	UCS1 KOREA			
8	LEAK TESTER	DP Housing, EHPS 外	6	S&T			
9	INLINE Automation Assembly	Custom order	1	DaeHyeon ENG			
10	Impregnation line	-	1	SuYeon Industry			Impregnation
※	Casting analysis S/W	ANYCASTING 6.5	1	ANYCASTING			







설비현황

## Facility Status

### CASTING



## PROCESSING



## AUTOMATION LINE



설비현황

# Facility Status

## Measuring equipment

No	Equipment	Manufacturer	Model (Specification)	Q'ty	Remarks
1	3D measuring instrument	MITUTOYO	CRYSTA-APEX S 9106	1	900*1000*600
			CRYSTA-APEX S 7106	1	700*1000*600
		ZEISS	CONTURA G2	1	1000*1200*600
2	Shape measuring instrument	Mahr	XC2	1	
3	X-RAY Inspector	Tech Valley	TVX-IL1605T	1	CT included
4	UTM (Universal Property Tester)	Daekyung Tech	DTU - 900 MHA - 100 KN	1	
5	Component analyzer	SPECTRO	SPECTROMAXx	1	Al, SUS, S45C
6	Surface roughness meter	MITUTOYO	SJ-410	1	
7	2D measuring instrument	TESA	Micro Height 600	1	
8	IN-LINE Automation Meter	DongDo TECH	Custom order	1식	
9	Polishing Machine	Nano Tech	NA-P1000	1	
10	Paul Metal Microscope	OLYMPUS	GX41	1	
11	Projector	JATEN	300-200	1	
12	Brinell hardness tester	Samil Precision Co., Ltd.	3,000kg	1	
13	Sajeong Ban	ZUNG WON	2000×1500 外	4	
14	HIGHT GAUGE	MITUTOYO	900	3	
15	Electronic electronic scales	CAS	2g~10kg 外	2	
16	OUTSIDE M/M	MITUTOYO	0-25mm 外	15	
17	DIGIMATIC V/C	MITUTOYO	0-200mm 外	10	
18	Electric M / M	DONG DO	Private	6	
19	Cleanliness checker	YoungMin F&S	CEE-KC	1	





설비현황

## Facility Status

### MEASURING



2D measuring instrument



3D measuring instrument



DSC01600



HIGH GAUGE



X-RAY Inspector



Metallic microscope



Bore meter

## MEASURING



Leak meter 1



Leak meter 2



Universal Testing Machine



Density meter



Brinell hardness tester



Component analyzer



Projector



기술연구소

# Institute of Technology

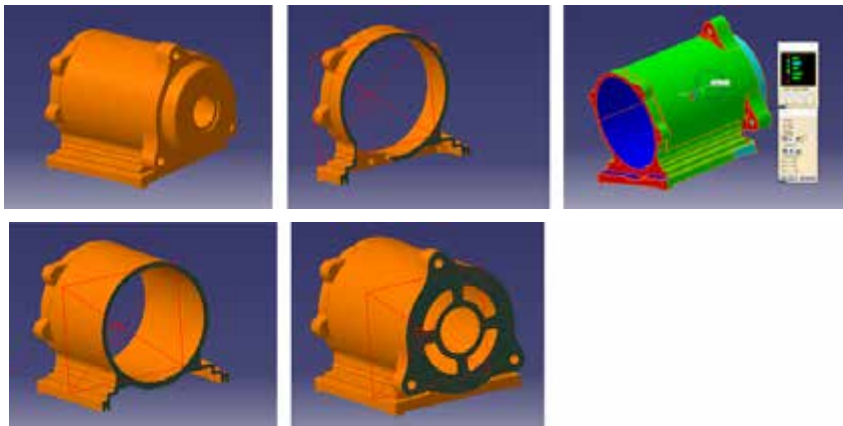
## DIECASTING DESIGN

- Product / Mold optimization design system
- Casting simulation system

We use the CAD / CAE program to provide the best process quality with product analysis, mold design and casting verification.

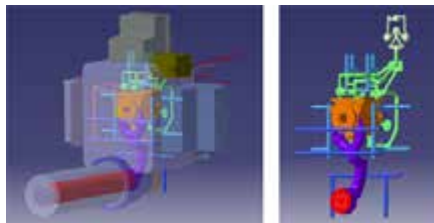
### Product Analysis

Auto Cad / Catia



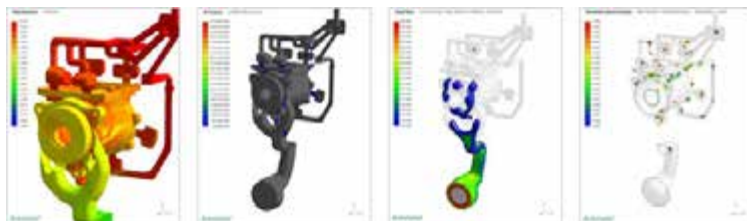
### Mold Design

Catia



### Casting Simulation

Anycasting



## ICT CONV.TECH

- Production manufacturing technology and ICT-based technology fusion process innovation
- Supporting the introduction and activation of the production / management field period system

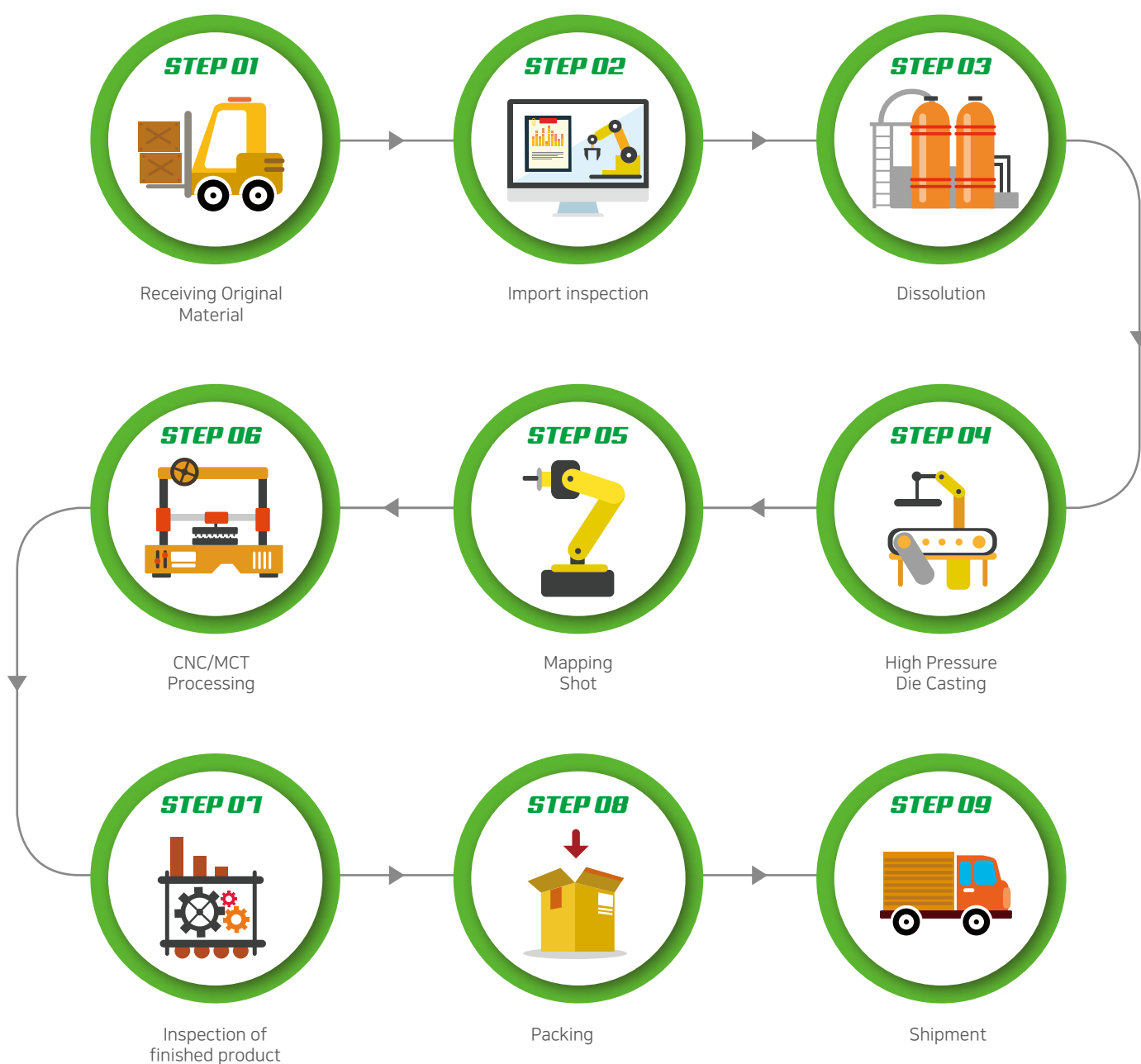
ICT-based systems drive manufacturing process innovation with automated production information and real-time data analysis management.

### MES System



제조공정

# Manufacture process



인증서

# Certification



ISO/TS 16969



SQ MARK (Main forging)



MSQ (machining)



Research Institute



MAIN-BIZ



INNO-BIZ



Venture Company Certification



Company specialized in materials and parts



고객사

**Client**

/ MAIN USER

**S&T Motiv****KR 모터스****KC****(주)대흥알앤티**  
Daeheung Rubber & Technology Co., Ltd.

/ END USER

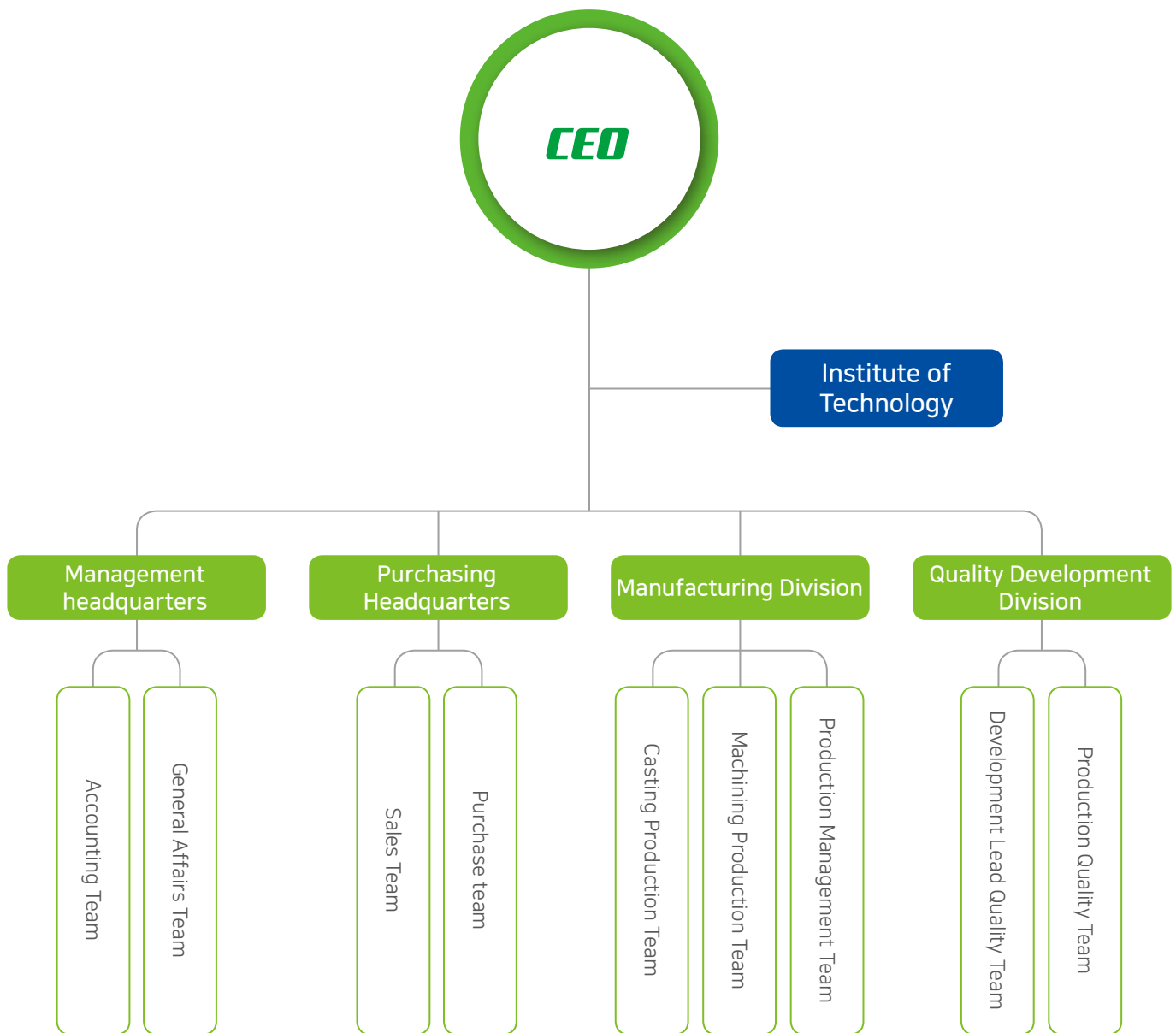
**HYUNDAI**  
MOTOR GROUP**KIA**

The Power to Surprise

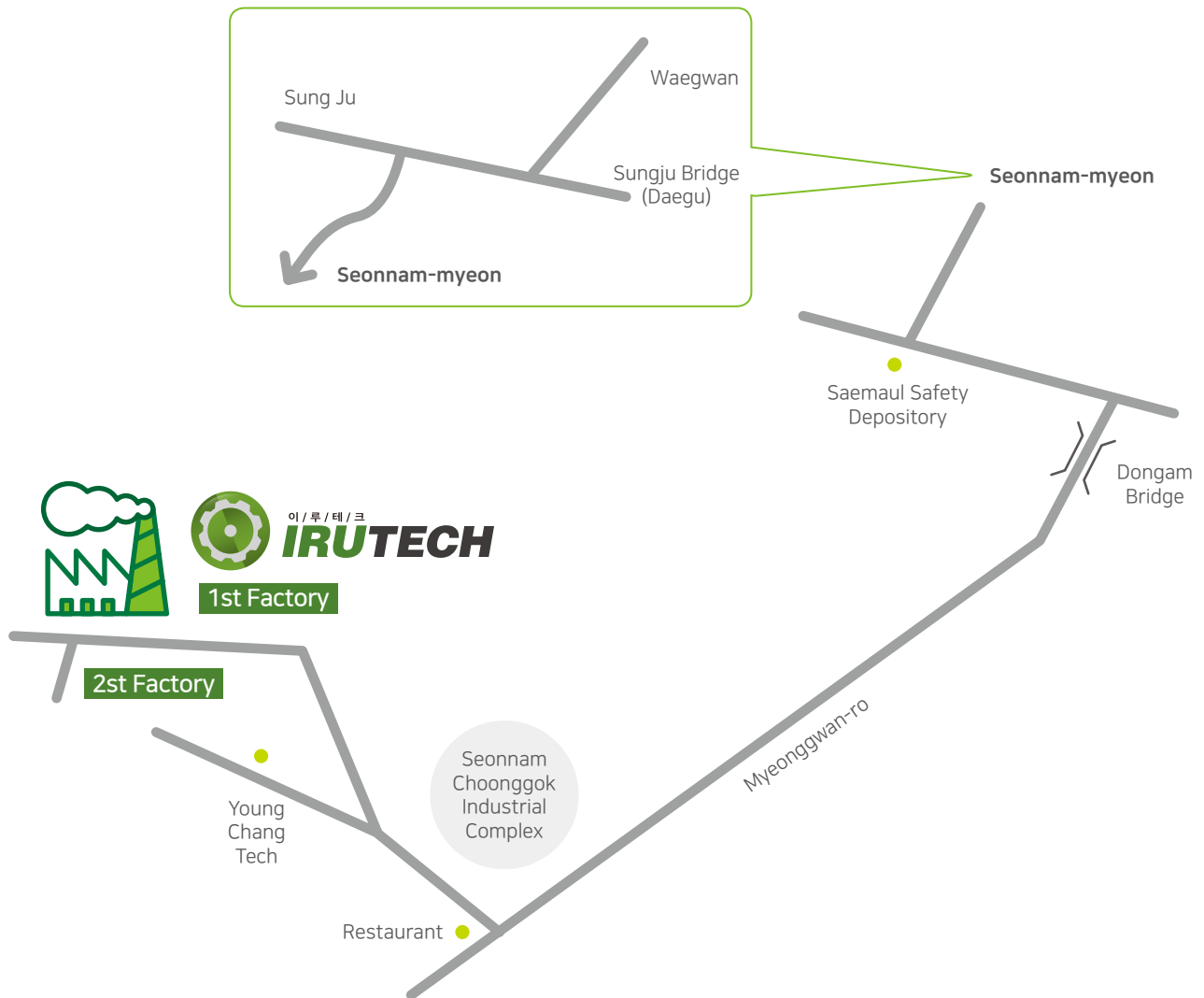
**HYUNDAI**  
**MOBIS****GM**

조직도

# Organization



오시는 길

**Contact**

**제1공장** 경북 성주군 선남면 명관로 337-112 (취곡리 249-1)  
TEL 054-931-1727 FAX 054-931-1728



**제2공장** 경북 성주군 선남면 명관로 337-57 (취곡리 251-2)  
TEL 054-931-1724 FAX 054-933-1724





[www.irutech.co.kr](http://www.irutech.co.kr)

제1공장 경북 성주군 선남면 명관로 337-112 Tel 054. 931. 1727 Fax 054. 931. 1728  
제2공장 경북 성주군 선남면 명관로 337-57 Tel 054. 931. 1724 Fax 054. 933. 1724